



CLEMCO
 The Performance System

TECHNICAL DATA SHEET

Note: For safe, efficient blasting, read and follow the owner's manual and seek training for everyone who will use this equipment.

Purpose

The Apollo 600 HP is designed for use with compressed air. It meets OSHA standards for respiratory protection and air noise limitations. The Apollo 600's full-helmet design protects the blast operator's head from rebounding abrasive and from job-site impact hazards.

The heavy-duty silver-grey cape protects the operator's neck, shoulders, and chest from rebounding abrasive.

Requirements for Operation

- Source of Grade D or better quality compressed breathing air, as defined by the Compressed Gas Association specification G-7.1
- Volume of compressed air for breathing: 15 cfm at 65 to 100 psi when using ACV; or 20 cfm at 90 to 100 psi when using Clem-Cool, CAT or CCT
- A breathing-air filter, such as Clemco CPF, to remove oil mist, moisture, particles, and odors
- Protective clothing, hearing and eye protection

Description of Operation

The Apollo 600 is a single-shell helmet with two adjustable suspension options. The DLX comfort-fit suspension (2 sizes) surrounds the operators head with comfortable padding. The adjustable web suspension fits head sizes 6.5 to 8. Adjustable chin strap holds the helmet in position on the operator's head.

The wide, full-view window provides an expansive field of vision. A series of lenses preserves the operator's clear view of the work surface and protects the operator from dust and abrasive in the ambient air. A replaceable fixed inner lens securely fits inside a molded rubber gasket. An intermediate lens protects the inner lens; and up to 3 tear-away (perforated) outer lenses complete the system. The tear-away lenses are removed one at a time to expose a clean lens beneath. The multi-lens system is held in place by a hinged frame with replaceable latch.

Description

The Apollo 600 HP is a type CE, continuous-flow, supplied-air respirator as defined by the National Institute for Occupational Safety and Health (NIOSH) for abrasive blasting to be used with a respirable compressed air source. The Apollo 600 is high-visibility red and offered with two suspension options.



To suit differing customer needs, the respirator is available in several configurations with one of the following air control devices:

- Constant-flow Connector (CFC) – fixed air flow
- Air-control Valve (ACV) – adjustable air volume
- Cool-air Tube (CAT) – cools incoming breathing air
- Climate-control Tube (CCT) – heats and cools incoming air

All breathing-air valves have minimum and maximum flow points as specified by NIOSH.

A flexible breathing tube maintains air flow between the inlet fitting on the operator's belt and a replaceable inlet fitting at the center rear of the helmet crown for maximum operator comfort and maneuverability. The tube contains specially-formulated sound-deadening materials to reduce noise levels of incoming air to 80 dBA.

The helmet is generously sized to allow ear plugs or ear muffs and safety glasses or goggles as needed.

Incoming air enters the system through the air control device on the operator's belt. It continues through the breathing-air tube to enter the helmet at the inlet fitting at the center rear of the helmet crown. An air-distribution channel guides air over the head to the operator's face.

Apollo 600 HP Supplied-Air Respirators

for use with compressed air supply

The incoming air to the respirator system maintains positive pressure inside the helmet. Exhaled air exits through the knit collar, which must fit snugly around the operator's neck. All helmet features work together to protect the operator from exposure to harmful dust and abrasive.

Advantages

- Two suspension options: web-style or DLX comfort-fit style
- Expansive, 180° full-view window
- Multi-lens system with rugged, positive-latching window frame
- Built-in mini visor prevents media ingress between lenses
- User-friendly cape attachment system
- Zip-in-and-out washable inner collar
- Replaceable inlet fitting
- Replaceable window latch
- Generous interior dimension allows supplementary hearing and eye protection
- Optional rectangular lens

Approvals and Certification

The Apollo 600 HP is NIOSH-approved as a type CE, continuous-flow supplied-air respirator; approval number: TC-19C-130. The respirator is recognized by OSHA as having an assigned protection factor (APF) of 1000 times the permissible exposure limit (PEL) for lead dust. It also meets the American National Standards Institute (ANSI) requirement for industrial head protection as stated in ANSI 289.1-2003 as a Type I, Class G protective helmet.

NOTE: Prior to use, ensure that the Apollo, type CE, supplied-air respirator is appropriate for your specific blasting conditions and requirements.

Respirator Systems and Accessories

Item Description	Stock No.	
Apollo 600 HP		
Less Respirator Hose	DLX Suspension	Web Suspension
With CFC	25190	24001
With ACV	25191	24002
With CAT	25192	24003
With CCT	25193	24004
With Clem-Cool	25194	24932
With 50 ft x 3/8" Respirator Hose		
With CFC	25200	24771
With ACV	25202	24210
With CAT	25204	24211
With CCT	25206	24212
With Clem-Cool	25208	24933
With 50 ft x 3/8" Respirator Hose and CPF-20 Filter		
With CFC	25201	24772
With ACV	25203	24213
With CAT	25205	24214
With CCT	25207	24215
With Clem-Cool	25209	25299

Options and Accessories

Constant Flow Connector with belt	21422
Cool-Air Tube with belt	04410
Clem-Cool Air Conditioner with belt	23825
Climate Control Tube with belt	04411
CPF-20 filter (for 1 to 2 operators)	03578
CPF-80 filter (for up to 4 operators)	03527
Carbon monoxide alarm, stationary CMS-1	23017
Carbon monoxide alarm, portable CMS-2	22894
Heavy-duty blast suit (leather front, cotton back)	
S M L XL 2XL 3XL	
08920 08921 08922 08923 24201 24202	
Light-weight seasonal blast suit (nylon front, cotton back)	
S M L XL 2XL 3XL 4XL	
22913 22914 22915 22916 22917 25022 24689	
Leather gloves	02243
Comfort Vest with Clem-Cool	25266
Low pressure conversion kit	
Converts HP helmet to LP helmet	24812
Noise reduction ear muffs	23886
Outer lens, rectangular, .015" (pk of 25)	24005

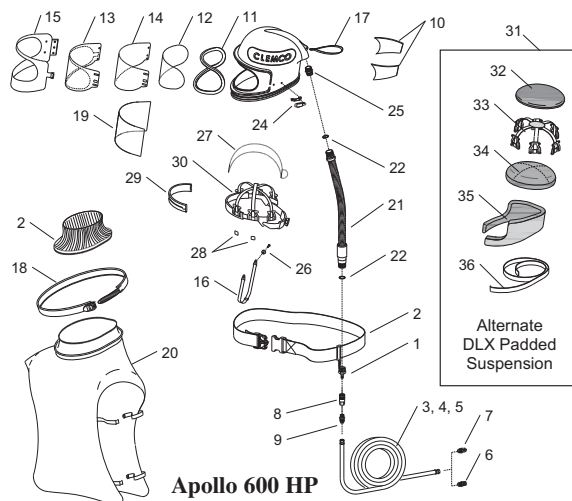
Shipping Dimensions and Weights

Apollo 600 Respirator, 14-1/2 x 13 x 15	9 lbs
50 ft x 3/8" Respirator Hose, 12 x 12 x 5	7 lbs
CPF-20 Breathing-air Filter, 21 x 20 x 10	21 lbs

Authorized Distributor:

Replacement Parts

Item Description	Stock No.
1. Constant-flow connector, HP (alternate), without belt	21415
2. Belt, 2" web with buckle	04430
3. Respirator hose, 3/8" x 25 ft. (alternate), includes items 6 and 7	04397
4. Respirator hose, 3/8" x 50 ft. (alternate), includes Items 6 and 7	04415
5. Respirator hose, 3/8" x 100 ft. (alternate), includes items 6 and 7	04398
6. Adaptor, 3/8" hose to 3/8 NPT	00022
7. Union, 3/8" hose to 3/8" hose	01020
8. Disconnect, 1/4 NPT female	00025
9. Adaptor, 3/8" hose to 1/4 NPT	01019
10. Acoustical foam kit, both sides	
Not used with padded suspension	04369
11. Gasket, window	23819
12. Inner lens, .040", package of 5	04367
13. Outer lens, .0075", perf'ed, package of 25	04361
14. Intermediate lens, .020", package of 5	24943
package of 25	04373
15. Window frame assembly	24012
16. Chin strap	04460
17. Handle strap	03623
18. Cape attachment band	23801
19. Outer lens, .015", rectangular package of 25	24005
20. Cape, grey, includes item 23	23818
21. Breathing tube assembly w/ (2) item 22	22811
22. O-ring, 7/8" OD, 2 required	22815
23. Inner collar	08740
24. Latch kit, window frame includes base, screws and nuts	24006
25. Inlet fitting, breathing tube	23804
26. Chin strap holder kit (2 w/ fasteners)	24008
27. Partition, air baffle	23811
28. Clips, suspension (pack of 4)	24773
29. Sweatband, used with item 30	23817
30. Web suspension with sweatband (alternate)	23802
31. DLX padded suspension kit (alternate) includes items 27 and 32 thru 36	25189
32. Pad, top	25181
33. Suspension web (for DLX only)	25184
34. Pad, middle	25182
35. Pad, side	
black/grey fits most head sizes	25183
black/blue for smaller head sizes	25187
36. Hook-fastener tape, 1" adhesive backed, 3-ft. used, specify feet required	25185
Apollo 600 HP Owner's Manual	23930



ISO 9001:2008 certified. Clemco is committed to continuous product improvement. Specifications are subject to change without notice.



CLEMCO
The Performance System

TECHNICAL DATA SHEET

Note: For safe, efficient blasting, read and follow the owner's manual and seek training for everyone who will use this equipment.

Purpose

The Apollo 600 LP is designed for use with an ambient air pump. It meets OSHA standards for respiratory protection and air noise limitations. The Apollo 600's full-helmet design protects the blast operator's head from rebounding abrasive and from job-site impact hazards.

The heavy-duty silver-grey cape protects the operator's neck, shoulders, and chest from rebounding abrasive.

Requirements for Operation

The following items are required or recommended for operation, but may not be included with this respirator:

- An ambient air pump capable of delivering 7 to 15 cfm of air at 8 to 12 psi
- Output from the ambient air pump must meet the standard for Grade D breathing air, as defined by the Compressed Gas Association, Commodity Specification: G-7.1 (www.cganet.com)
- Approved 1/2-inch ID x 50 or 100 feet long respirator hose from the ambient air pump to the helmet connection
- Protective clothing, gloves, and shoes suitable for a heavy construction site
- Primary hearing and eye protection

Description of Operation

The Apollo 600 is a single-shell helmet with two adjustable suspension options. The DLX comfort-fit suspension (2 sizes) surrounds the operators head with comfortable padding. The adjustable web suspension fits head sizes 6.5 to 8. Adjustable chin strap holds the helmet in position on the operator's head.

The wide, full-view window provides an expansive field of vision. A series of lenses preserves the operator's clear view of the work surface and protects the operator from dust and abrasive in the

Description

The Apollo 600 LP is a type CE, continuous-flow, supplied-air respirator as defined by the National Institute for Occupational Safety and Health (NIOSH) for abrasive blasting to be used with an ambient air pump. The Apollo 600 is high-visibility red and offered with two suspension options.



surrounding air. A replaceable fixed inner lens securely fits inside a molded rubber gasket. An intermediate lens protects the inner lens; and up to 3 tear-away (perforated) outer lenses complete the system. The tear-away lenses are removed one at a time to expose a clean lens beneath. The multi-lens system is held in place by a hinged frame with replaceable latch.

The Apollo 600 LP comes with a Constant-Flow Connector (CFC) that provides a fixed flow of air. It is engineered for flow settings as specified by NIOSH.

A flexible breathing tube maintains air flow between the inlet fitting on the operator's belt and a replaceable inlet fitting at the center rear of the helmet crown for maximum operator comfort and maneuverability. The tube contains specially-formulated sound-deadening materials to reduce noise levels of incoming air to 80 dBA.

The helmet is generously sized to allow ear plugs or ear muffs and safety glasses or goggles as needed.

Incoming air enters the system through the air control device on the operator's belt. It continues through the breathing-air tube to enter the helmet at the inlet fitting at the center rear of the helmet crown. An air-distribution channel guides air over the head to the operator's face.

Apollo 600 LP Supplied-Air Respirators

for use with ambient-air pump

Advantages

- Two suspension options: web-style or DLX comfort-fit style
- Expansive, 180° full-view window
- Multi-lens system with rugged, positive-latching window frame
- Built-in mini visor prevents media ingress between lenses
- User-friendly cape attachment system
- Zip-in-and-out washable inner collar
- Replaceable inlet fitting
- Replaceable window latch
- Generous interior dimension allows supplementary hearing and eye protection
- Optional rectangular lens

Approvals and Certifications

The Apollo 600 LP helmet is a NIOSH-approved type CE respirator (approval number TC# 19C - 358) and is recognized by OSHA as having an assigned protection factor (APF) for lead dust of 1000 times the permissible exposure limit (PEL) for lead dust. It also meets the American National Standards Institute (ANSI) requirement for industrial head protection as stated in ANSI 289.1-2003 as a Type I, Class G protective helmet.

NOTE: Prior to use, ensure that the Apollo, type CE, supplied-air respirator is appropriate for your specific blasting conditions and requirements.

Respirator Systems and Accessories

Description	Stock No.	
	DLX Suspension	Web Suspension
Apollo 600 LP, less respirator hose, with constant flow connector	25195	24010
Apollo 600 LP, with 50 ft. respirator hose, and constant flow connector	25210	24011

Options and Accessories

Heavy-duty blast suit (leather front, cotton back)

S	M	L	XL	XXL	XXXL
08920	08921	08922	08923	24201	24202

Light-weight seasonal blast suit (nylon front, cotton back)

S	M	L	XL	XXL	XXXL
22913	22914	22915	22916	22917	25022

Leather gloves02243
Comfort Vest with Clem-Cool25266
High pressure conversion kit
Converts LP helmet to HP helmet24811
Noise reduction ear muffs23886
Clemco Do-rag23814
Ambient Air Pump,
Single-operator, CAP-1.....22383
Four-operator, Stationary, CAP-422530
Four-operator, Portable, CAP-4C22384
Rectangular outer lens, .015", non-perf., (pk of 25).....24005

Related Clemco Literature

Description	Stock No.
Contractor Series Catalog	21385
Abrasive Blasting Safety Practices	22090
Blast Off 2	09294
Safety Equipment Product Study	07764

Shipping Dimensions and Weights

Respirator

Stock No.	Dimensions	Weight
24010	14-1/2" x 13" x 15"	7.5 lb
24011	14-1/2" x 13" x 15"	18.5 lb

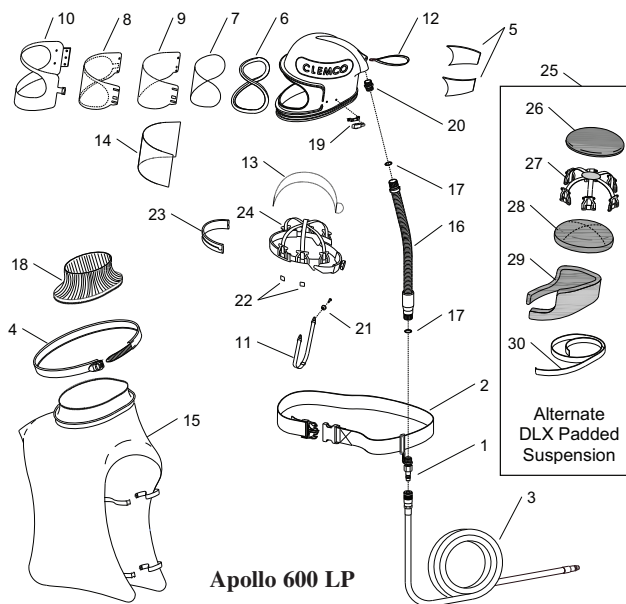
Respirator Hose (in separate poly bag)

Stock No.	Dimensions	Weight
22510	1/2" x 50 ft. (18" x 18" x 4")	11 lb
21413	1/2" x 100 ft. (18" x 18" x 6")	22 lb

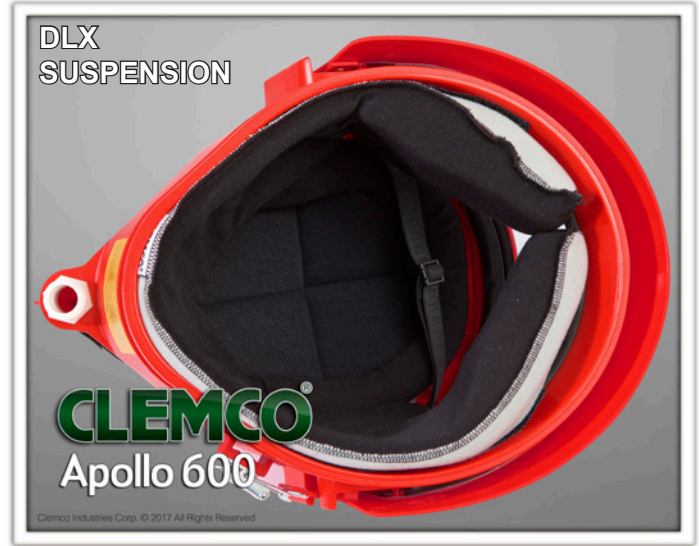
Authorized Distributor:

Replacement Parts

Item	Description	Stock No.
1.	Constant-flow connector, LP w/o belt	21429
2.	Belt, 2" web with buckle	04430
3.	Respirator hose, 1/2" x 50-foot (alternate)	22510
	1/2" x 100-foot (alternate)	21413
4.	Cape attachment band	23801
5.	Acoustical foam kit, both sides not used with padded suspension	04369
6.	Gasket, window	23819
7.	Inner lens, .040", package of 5	04367
8.	Outer lens, .0075", perf'ed, pack of 25	04361
9.	Intermediate lens, .020", package of 5	24943
	package of 25	04373
10.	Window frame assembly	24012
11.	Chin strap	04460
12.	Handle strap	03623
13.	Partition, air baffle	23811
14.	Outer lens, .015", rectangular, pkg. of 25	24005
15.	Cape, black with inner collar	23818
16.	Breathing tube assembly w/ (2) item 17	22811
17.	O-ring, 7/8" OD, 2 required.....	22815
18.	Inner collar, cape	08740
19.	Latch kit, window frame includes base, screws and nuts	24006
20.	Inlet fitting	23804
21.	Chin strap holder kit (2 w/ fasteners)	24008
22.	Clips, suspension (pack of 4)	24773
23.	Sweatband, used with item 24	23817
24.	Web suspension with sweatband (alternate)	23802
25.	DLX padded suspension kit (alternate) includes items 13 and 26 thru 30.....	25189
26.	Pad, top	25181
27.	Suspension web	25184
28.	Pad, middle	25182
29.	Pad, side black/grey fits most head sizes	25183
	black/blue for smaller head sizes.....	25187
30.	Hook-fastener tape, 1" adhesive backed, 3-ft. used, specify feet required	25185
	Apollo 600 LP Owner's Manual	23929



ISO 9001:2000 certified. Clemco is committed to continuous product improvement. Specifications are subject to change without notice.







CLEMCO
 The Performance System

TECHNICAL DATA SHEET

Note: For safe, efficient blasting, read and follow the owner's manual and seek training for everyone who will use this equipment.

Purpose

The Apollo 60 HP meets ANSI standards for impact protection and OSHA standards for respiratory protection and noise limitations. The Apollo 60's full-helmet design protects the blast operator's head from rebounding abrasive and from construction-site impact hazards.

The heavy-duty cape protects the operator's neck, shoulders, and chest from rebounding abrasive.

Requirements for Operation

The following items are required or recommended for operation, but are not included with this respirator:

- Source of Grade D (or better quality) breathing-air providing 7 to 15 cfm at 65 to 100 psi (If CAT or CCT is used, increase cfm to 20)
- A breathing-air filter (such as the Clemco CPF) to remove oil, moisture, particles, and odors
- Carbon monoxide monitor and alarm (such as the CMS-2)
- 3/8-inch respirator hose from the breathing-air filter to the helmet connection
- Protective clothing, gloves, and shoes suitable for a heavy construction site
- Primary hearing and eye protection

Description of Operation

The Apollo 60 includes a double-shell construction helmet supported by an adjustable suspension. The operator adjusts the suspension to fit, then installs it in the helmet. A chin strap holds the helmet firmly in place.

The wide, full-view window provides an expansive field of view. An inner fixed lens seals out dust and abrasive. Up to five lightweight, disposable outer lenses, held in place by a hinged frame, protect the inner lens from pitting. As the outermost disposable lens becomes pitted, it can be torn off to expose the next lens.

Description

The Apollo 60 HP is a Type CE, continuous-flow, supplied-air respirator for abrasive blasting, to be used with compressed air systems. The high visibility red helmet has a full-view window, and a waist-length protective cape.

**Apollo 60 HP
 Supplied-Air
 Respirators**

Stock No.

- 10505, 10508, 10509, 10510,
 10511, 10512, 10513, 10514,
 10515, 20213, 20214, 21300**



The helmet can be purchased with one of the following:

- Constant-Flow Connector - fixed air flow (no adjustment possible)
- Air Control Valve - to adjust flow rate of incoming air
- Cool Air Tube - to cool incoming air
- Climate Control Tube - to cool or warm incoming air as needed

With all but the Constant-Flow Connector, the operator can adjust the flow of air. None of the valves can be adjusted beyond preset minimum and maximum settings specified by OSHA.

A flexible breathing tube between the valve and the helmet allows free movement of the operator's head. This tube contains specially-formulated sound-deadening materials that help the respirator comply with 80 dBA maximum noise level while allowing free air flow. While blasting, the operator must wear ear plugs or other suitable hearing protection and safety glasses or goggles.

The air enters the helmet at the rear, travels through a sound-attenuating distribution system at the top, and circulates

about the operator's head and face. The incoming air maintains positive pressure inside the helmet, so exhaled air exits via the knit collar. Maintaining positive pressure inside the helmet helps keep out potentially harmful dust and abrasive.

Advantages

- Wide, full-view window
- Lightweight construction
- Nylon carrying strap
- Allows operator to wear supplementary hearing and primary eye protection

Approvals and Certification

The Apollo 60 helmet is a NIOSH-approved, type CE respirator (approval number TC-19C-130) and is recognized by OSHA as having an assigned protection factor (APF) against lead dust of 1000 times the permissible exposure limit (PEL). It also meets the American National Standards Institute (ANSI) requirement for hard hat protection.

WARNING!

Prior to use, ensure that the Apollo, type CE, supplied-air respirator is appropriate for your specific blasting conditions and requirements.

Related Clemco Literature

Description	Stock No.
Contractor Series Catalog	21385
Abrasive Blasting Safety Practices	22090
Blast Off 2	09294
Safety Equipment Product Study	07764
Apollo 60 HP Owner's Manual	10533

Options and Accessories

Description	Stock No.
CPF-20 air filter (for one operator).....	03578
CPF-80 air filter (for up to four operators).....	03527
Carbon monoxide alarm, CMS-2	22894
Blast Suit S (08920), M (08921), L (08922), XL (08923)	
Leather gloves	02243
Low pressure conversion kit. Converts HP helmet to LP helmet	22079

Respirator Systems and Accessories

NOTE: Respirators do not include alternate respirator hose.

Alternate respirator hose must be ordered separately.

Description	Stock No.
Apollo 60 HP with CFC	21300
w/Air Control Valve.....	10505
w/Cool Air Tube	10508
w/Climate Control Tube.....	10509
Apollo 60 HP with CFC and hose	20213
w/Air Control Valve & hose	10510
w/Cool Air Tube & hose	10511
w/Climate Control Tube & hose	10512
Apollo 60 HP with CFC, hose and CPF-20	20214
w/Air Control Valve, hose and CPF-20	10513
w/Cool Air Tube, hose and CPF-20	10514
w/Climate Control Tube, hose and CPF-20	10515

Packaging

Respirator Systems

Stock No.	Dimensions	Weight
21300	13 1/2" x 13" x 11"	7.5 lb
10505	(same)	7.5 lb
10508	(same)	8.4 lb
10509	(same)	8.9 lb
20213	(same)	15.5 lb
10510	(same)	15.5 lb
10511	(same)	16.4 lb
10512	(same)	16.9 lb
20214	(same)	35.5 lb
10513	(same)	35.5 lb
10514	(same)	36.4 lb
10515	13 1/2" x 13" x 11"	36.9 lb

Respirator Hose (in poly bag)

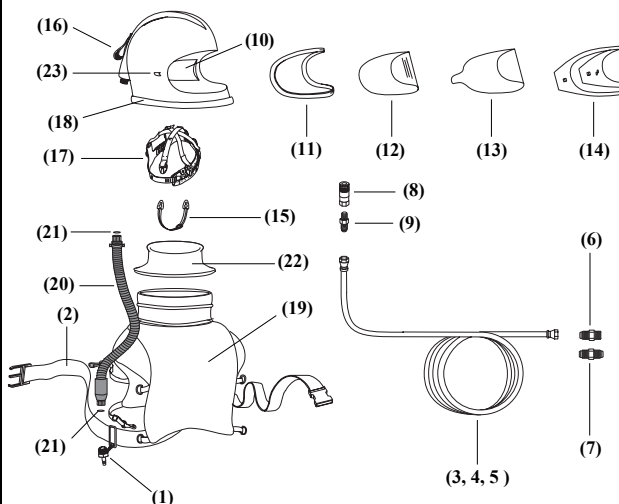
Stock No.	Dimensions	Weight
04397 (25 ft)	10" x 10" x 3"	2.8 lb
04415 (50 ft)	12" x 12" x 5"	5.8 lb
04398 (100 ft)	14" x 14" x 5"	11.6 lb

CPF (in box)

Stock No.	Dimensions	Weight
03578 (CPF-20)	21" x 12" x 9 1/2"	20 lb
03527 (CPF-80)	(same)	22 lb

Replacement Parts

Item	Description	Stock No.
1.	Constant-Flow Connector, without belt	21415
2.	Belt assembly, 2"	04430
3.	Respirator hose, 3/8" x 25' (includes 7 & 8)	04397
4.	Respirator hose, 3/8" x 50' (includes 7 & 8)	04415
5.	Respirator hose, 3/8" x 100' (includes 7 & 8)	04398
6.	Adaptor, 3/8" hose to 3/8" pipe	00022
7.	Union, 3/8" hose to 3/8" hose	01020
8.	Disconnect, 1/4" female	00025
9.	Adaptor, 3/8" hose to 1/4" pipe	01019
10.	Acoustical foam kit, sides	04369
11.	Gasket, window	04452
12.	Inner lens, .040" (5)	04367
13.	Outer lens, .0075", perforated (25)	04361
14.	Window frame kit	08741
15.	Chin strap	04460
16.	Handle strap	03623
17.	Suspension	10532
18.	Cape attachment strap	10534
19.	Cape, red, with black inner collar	04435
20.	Breathing tube assembly w/swivel ends	22811
21.	O-ring, 11/16" ID x 7/8" OD, 2 required	22815
22.	Inner collar kit	08740
23.	Window latch kit	04368



Authorized Distributor:

ISO 9001 certified. Clemco is committed to continuous product improvement. Specifications are subject to change without notice.

© 2000 Clemco Industries Corp. • One Cable Car Drive • Washington, MO 63090 • Phone (636) 239-4300 • Fax (636) 239-0788

Stock No. 21961

www.clemcoindustries.com

Job No. 1195-1295 • Date of Issue: 06/98, Rev. A; 05/00



CLEMCO
The Performance
System

TECHNICAL DATA SHEET

Note: For safe, efficient blasting, read and follow the owner's manual and seek training for everyone who will use this equipment.

Purpose

The Apollo 60 LP is designed for use with an ambient air pump. It meets OSHA standards for respiratory protection and noise limitations. The Apollo 60's full-helmet design protects the blast operator's head from rebounding abrasive and from construction-site impact hazards.

The heavy-duty cape protects the operator's neck, shoulders, and chest from rebounding abrasive.

Requirements for Operation

The following items are required or recommended for operation, but are not included with this respirator:

- An ambient air pump that is NIOSH approved for use with respirators, capable of delivering 7 to 15 cfm of air at 8 to 12 psi
- 1/2-inch x 100 feet respirator hose from the ambient air pump to the helmet connection
- Protective clothing, gloves, and shoes suitable for a heavy construction site
- Primary hearing and eye protection

Description of Operation

The Apollo 60 includes a double-shell construction helmet supported by an adjust-able suspension. The operator adjusts the suspension to fit, then installs it in the helmet. A chin strap holds the helmet firmly in place.

The wide, full-view window provides an expansive field of view. An inner fixed lens seals out dust and abrasive. Up to five lightweight, disposable outer lenses, held in place by a hinged frame, protect the inner lens from pitting. As the outermost disposable lens becomes pitted, it can be torn off to expose the next lens.

The Apollo 60 LP comes with a Constant-Flow Connector that provides a fixed flow of air.

Description

The Apollo 60 LP is a Type CE, continuous flow, supplied-air respirator with Constant-Flow Connector for abrasive blasting, for use with an ambient air pump. The high visibility red Apollo 60 LP is a double-shell helmet, with a full-view window, and a protective cape.

Apollo 60 LP Supplied-Air Respirator

Stock No. 22081, 22082



A flexible breathing tube between the Constant-Flow Connector and the helmet allows free movement of the operator's head. This tube contains specially-formulated sound-deadening materials that help the respirator comply with 80 dBA maximum noise level while allowing free air flow. For maximum protection while blasting, the operator must wear ear plugs or other suitable hearing protection and safety glasses or goggles.

The air enters the helmet at the rear, travels through a sound-attenuating distribution system at the top, and circulates about the operator's face. The incoming air maintains slightly positive pressure inside the helmet, so exhaled air exits via the knit collar. Maintaining positive pressure inside the helmet helps keep out the potentially harmful dust and abrasive.

Advantages

- Requires no compressor, breathing air filter, or CO monitor
- Wide, full-view window
- Lightweight construction
- Nylon carrying strap
- Allows operator to wear supplementary hearing and primary eye protection

Approvals and Certifications

The Apollo 60 LP helmet is a NIOSH-approved type CE respirator (approval number TC# 19C - 358) and is recognized by OSHA as having an assigned protection factor (APF) against lead dust of 1000 times the permissible exposure limit (PEL). It also meets the American National Standards Institute (ANSI) requirement for hard hat protection.

WARNING!

Prior to use, ensure that the Apollo, type CE, supplied-air respirator is appropriate for your specific blasting conditions and requirements.

Related Clemco Literature

Description	Stock No.
Contractor Series Catalog	21385
Abrasive Blasting Safety Practices	22090
Blast Off 2	09294
Safety Equipment Product Study	07764
Apollo 60 LP Owner's Manual	22084

Options and Accessories

Description	Stock No.
Blast Suit S (08920), M (08921), L (08922), XL (08923)	
Leather gloves	02243
High pressure conversion kit.	
Converts LP helmet to HP helmet	22080

Respirator Systems and Accessories

Description	Stock No.
Apollo 60 LP, without respirator hose	22081
Apollo 60 LP, with 1/2" x 100' respirator hose	22082

Packaging

All helmet systems boxes are 13 1/2" x 13" x 11"

Respirator Systems

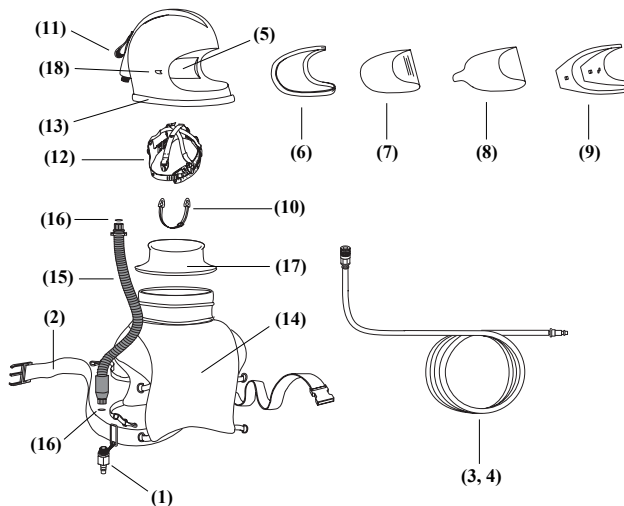
Stock No.	Dimensions	Weight
22081	13 1/2" x 13" x 11"	7.5 lb
22082	(same)	15.5 lb

Respirator Hose (in poly bag)

Stock No.	Dimensions	Weight
21413 (100 ft)	14" x 14" x 5"	11.6 lb

Replacement Parts

Item	Description	Stock No.
1.	Constant-Flow Connector, LP, without belt	21429
2.	Belt assembly, 2"	04430
3.	Respirator hose, 1/2" x 100'	21413
4.	Respirator hose, 1/2" x 50'	22510
5.	Acoustical foam kit, sides	04369
6.	Gasket, window	04452
7.	Inner lens, .040" (5)	04367
8.	Outer lens, .0075", perforated (25)	04361
9.	Window frame kit	08741
10.	Chin strap	04460
11.	Handle strap	03623
12.	Suspension	10532
13.	Cape attachment strap	10534
14.	Cape, with inner collar	04435
15.	Breathing tube assembly w/swivel ends	22811
16.	O-ring, 11/16" ID x 7/8" OD, 2 required	22815
17.	Inner collar kit	08740
18.	Window latch kit	04368



Authorized Distributor:

ISO 9001 certified. Clemco is committed to continuous product improvement. Specifications are subject to change without notice.



CLEMCO
The Performance System

TECHNICAL DATA SHEET

Note: For safe, efficient blasting, read and follow the owner's manual and seek training for everyone who will use this equipment.

Purpose

The Apollo 20 HP is designed for use with compressed air systems. It meets OSHA standards for respiratory protection and noise limitations. The Apollo 20's full-helmet design and heavy-duty cape protect the blast operator's head, neck, shoulders, and chest from rebounding abrasive.

Requirements for Operation

The following items are required or recommended for operation, but are not included with this respirator:

- Source of Grade D (or better quality) breathing air providing 7 to 15 cfm at 65 to 100 psi (if Clem-Cool or CCT is used, increase cfm to 20)
- A breathing air filter (such as the Clemco CPF) to remove oil, moisture, particles, and odors
- Carbon monoxide monitor and alarm (such as the Clemco CMS-2)
- 3/8-inch x 50-foot approved respirator hose from the breathing air filter to the helmet connection, stock no. 04415
- Protective clothing, gloves, and shoes suitable for a heavy construction site
- Primary hearing and eye protection

Description of Operation

The Apollo 20 is a single-shell construction helmet supported by an adjustable suspension. The DLX comfort-fit suspension surrounds the operator's head with comfortable padding. A chin strap holds the helmet firmly in place. The rectangular window provides a clear field of view. An inner fixed lens and one middle lens seal out dust and abrasive.

Up to three lightweight, disposable outer lenses, held in place by a hinged frame, protect the middle lens from pitting. As the outermost disposable lens becomes pitted, it can be torn off to expose the next lens.

Description

The Apollo 20 HP is a Type CE, continuous-flow, supplied-air respirator for abrasive blasting, to be used with a compressed air source. The bright green helmet has a box-front window, and a protective cape. The Apollo 20 comes standard with DLX comfort-fit suspension.

Apollo 20 HP Supplied-Air Respirator

For use with
compressed air supply



The helmet can be purchased with one of the following:

- Constant-Flow Connector — fixed air flow (no adjustment possible)
- Air Control Valve — to adjust flow rate of incoming air
- Clem-Cool Air Conditioner — to cool incoming air
- Climate Control Tube — to cool or warm incoming air as needed

With all but the Constant-Flow Connector, the operator can adjust the flow of air. None of the valves can be adjusted beyond pre-set minimum and maximum settings specified by NIOSH.

A flexible breathing tube between the valve and the helmet allows free movement of the operator's head. This tube contains specially-formulated sound-deadening materials that help the respirator comply with 80 dBA maximum noise level while allowing free air flow. For maximum protection while blasting, the operator should wear ear plugs or other suitable hearing protection and safety glasses or goggles.

The air enters the helmet at the rear, travels through a sound-attenuating

distribution system at the top, and circulates about the operator's face. The incoming air maintains positive pressure inside the helmet, so exhaled air exits via the knit collar. Maintaining positive pressure inside the helmet helps keep out potentially harmful dust and abrasive.

Advantages

- DLX comfort-fit suspension
- Box-front window features economical replacement lenses
- Sound-attenuating, air-distribution channel
- Lightweight construction
- Molded-in carrying handle
- Allows operator to wear supplementary hearing and primary eye protection

Approvals and Certifications

The Apollo 20 HP helmet is a NIOSH-approved, type CE respirator (approval number TC-19C-338) and is recognized by OSHA as having an assigned protection factor (APF) against lead dust of 1000 times the permissible exposure limit (PEL).

NOTE: Prior to use, ensure that the Apollo, type CE, supplied-air respirator is appropriate for your specific blasting conditions and requirements.

Respirator Systems and Accessories

NOTE: The respirators listed DO NOT include respirator hose.
Respirator hose must be ordered separately.

(-) Apollo 20 HP DLX w/Constant-Flow Connector	20975
(-) Apollo 20 HP DLX w/Air Control Valve	21419
(-) Apollo 20 HP DLX w/Clem-Cool Air Conditioner	21420
(-) Apollo 20 HP DLX w/Climate Control Tube	21421
(-) Constant-Flow Connector with belt	21422
(-) Air Control Valve with belt	04440
(-) Clem-Cool Air Conditioner with belt	23825
(-) Cool-Air Tube with belt	04410
(-) Climate Control Tube with belt	04411
(-) Low pressure conversion kit. Converts HP helmet to LP helmet	22680
(-) DLX Suspension Kit (for replacement or conversion to DLX style)	25215

Options and Accessories

Description	Stock No.
CPF-20 Air Filter (for one or two operators)	03578
CPF-80 Air Filter (for up to four operators)	03527
Carbon monoxide alarm, CMS-2	22894
Heavy-duty blast suit (leather front, cotton back)	
S M L XL XXL XXXL	
08920 08921 08922 08923 24201 24202	
Light-weight seasonal blast suit (nylon front, cotton back)	
S M L XL XXL XXXL	
22913 22914 22915 22916 22917 25022	
Leather gloves	02243
Comfort Vest with Clem-Cool	25266

Packaging

Respirators

Stock No.	Dimensions	Weight
20975	14-1/2" x 13" x 15"	8 lb
21419	(same)	8 lb
21420	(same)	8.9 lb
21421	(same)	9.4 lb

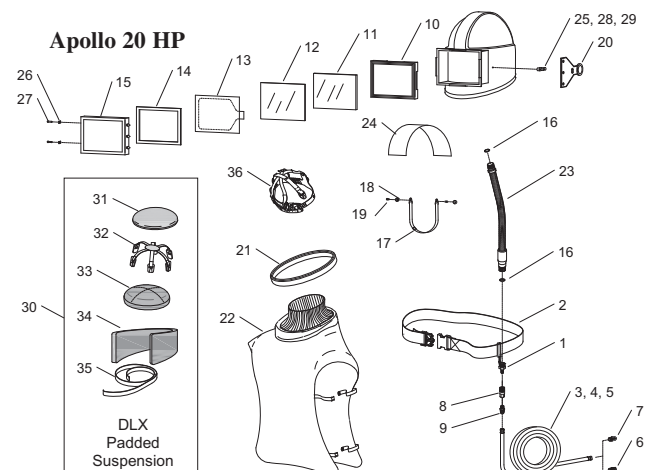
Respirator Hose (in poly bag)

Stock No.	Dimensions	Weight
04397 (25 ft)	10" x 10" x 3"	2.8 lb
04415 (50 ft)	12" x 12" x 5"	5.8 lb
04398 (100 ft)	14" x 14" x 5"	11.6 lb

Authorized Distributor:

Replacement Parts

Item	Description	Stock No.
1.	Constant-flow connector, HP, (alternate), does not include belt	21415
2.	Belt, 2" web with buckle	04430
3.	Respirator hose, 3/8" x 25 ft. (alternate), includes items 6 and 7	04397
4.	Respirator hose, 3/8" X 50 ft. (alternate), includes Items 6 and 7	04415
5.	Respirator hose, 3/8" x 100 ft. (alternate), includes items 6 and 7	04398
6.	Adapter, 3/8" hose to 3/8" pipe	00022
7.	Union, 3/8" hose to 3/8" hose	01020
8.	Disconnect, 1/4" female	00025
9.	Adapter, 3/8" hose to 1/4" pipe	01019
10.	Gasket, molded window	99996
11.	Inner lens, 4-5/8" x 6-5/8" nom., .125" package of 5	21409
12.	Middle lens, 5" x 7" nom., .094" package of 5	21410
13.	Cover lens, perforated, .0075" package of 25	21411
14.	Gasket, lens frame	21041
15.	Lens frame	20976
16.	O-Ring, 7/8" OD, 2 required	22815
17.	Chin Strap	04460
18.	Chin strap holder, 2 required	21696
19.	Screw, 8-32 x 1/2" ph hd, 2 required	21119
20.	Latch, lens frame, rubber	21298
21.	Cape attachment strap	10534
22.	Cape with inner collar	21301
23.	Breathing tube assembly includes two of item 16	22811
24.	Partition, air baffle	21118
25.	Button, latch	21040
26.	Nut, lens frame	90041
27.	Screw, lens frame	90295
28.	Screw, 8-32 x 1/2" sm	21402
29.	Screw, 8-32 x 1" sm	21403
30.	DLX padded suspension kit includes items 31 thru 35	25215
31.	Pad, top	25216
32.	Suspension web	25219
33.	Pad, middle	25182
34.	Pad, side	25218
35.	Hook-fastener tape, 1" adhesive backed, 2-ft. used, specify feet required	25185
36.	Web suspension w/sweatband (alternate)	10532
	Apollo 20 HP Owner's Manual	21990



ISO 9001:2000 certified. Clemco is committed to continuous product improvement. Specifications are subject to change without notice.



CLEMCO
The Performance System

TECHNICAL DATA SHEET

Note: For safe, efficient blasting, read and follow the owner's manual and seek training for everyone who will use this equipment.

Purpose

The Apollo 20 LP is designed for use with an ambient air pump. It meets OSHA standards for respiratory protection and noise limitations. The Apollo 20's full-helmet design and heavy-duty cape protect the blast operator's head, neck, shoulders, and chest from rebounding abrasive.

Requirements for Operation

The following items are required or recommended for operation, but are not included with this respirator:

- An ambient air pump approved for use with respirators, capable of delivering 7 to 15 cfm of air at 8 to 12 psi
- 1/2-inch x 50-foot respirator hose from the ambient air pump to the helmet connection, stock no. 22510
- Protective clothing, gloves, and shoes suitable for a heavy construction site
- Primary hearing and eye protection
- Output from the ambient air pump must meet the standard for Grade D breathing air, as defined by the Compressed Gas Association, Commodity Specification: G-7.1 (www.cganet.com)

Description of Operation

The Apollo 20 is a single-shell construction helmet supported by an adjustable suspension. The DLX comfort-fit suspension (2 sizes) surrounds the operators head with comfortable padding. A chin strap holds the helmet firmly in place. The rectangular window provides a clear field of view. An inner fixed lens and one middle lens seal out dust and abrasive.

Up to three lightweight, disposable outer lenses, held in place by a hinged frame, protect the middle lens from pitting. As the outermost disposable lens becomes pitted, it can be torn off to expose the next lens.

Description

The Apollo 20 LP is a Type CE, continuous flow, supplied-air respirator with Constant-Flow Connector for abrasive blasting, to be used with an ambient air pump. The bright green helmet has a box-front window, and a protective cape. The Apollo 20 comes standard with DLX comfort-fit suspension.



The Apollo 20 LP comes with a Constant-Flow Connector that provides a fixed flow of air. It is engineered for flow settings as specified by NIOSH.

A flexible breathing tube between the Constant-Flow Connector and the helmet allows free movement of the operator's head. This tube contains specially formulated sound-deadening materials that help the respirator comply with 80 dBA maximum noise level while allowing free air flow. For maximum protection while blasting, the operator must wear ear plugs or other suitable hearing protection and safety glasses or goggles.

The air enters the helmet at the rear, travels through a sound-attenuating distribution system at the top, and circulates about the operator's face. The incoming air maintains slightly positive pressure inside the helmet, so exhaled air exits via the knit collar. Maintaining positive pressure inside the helmet helps keep out the potentially harmful dust and abrasive.

Apollo 20 LP Supplied-Air Respirator

For use with
ambient-air pump

Advantages

- Requires no compressor, breathing air filter, or CO monitor
- DLX comfort-fit suspension
- Box-front window features economical replacement lenses
- Sound-attenuating, air-distribution channel
- Lightweight construction
- Molded-in carrying handle
- Allows operator to wear supplementary hearing and primary eye protection

Approvals and Certifications

The Apollo 20 LP helmet is a NIOSH-approved type CE respirator (approval number TC-19C-339) and is recognized by OSHA as having an assigned protection factor (APF) against lead dust of 1000 times the permissible exposure limit (PEL).

NOTE: Prior to use, ensure that the Apollo, type CE, supplied-air respirator is appropriate for your specific blasting conditions and requirements.

Respirator Systems and Accessories

Item	Description	Stock No.
(-)	Apollo 20 LP DLX w/Constant-Flow Connector, without respirator hose	21299
(-)	Apollo 20 L, DLX w/Constant-Flow Connector and 1/2" x 50' respirator hose	21423
(-)	High pressure conversion kit. Converts LP helmet to HP helmet	22690
(-)	Comfort Vest with Clem-Cool	25266
(-)	DLX Suspension Kit (for replacement or conversion to DLX style)	25215

Options and Accessories

Heavy-duty blast suit (leather front, cotton back)

S	M	L	XL	XXL	XXXL
08920	08921	08922	08923	24201	24202

Light-weight seasonal blast suit (nylon front, cotton back)

S	M	L	XL	XXL	XXXL
22913	22914	22915	22916	22917	25022

Leather gloves02243

Packaging

Respirator

Stock No.	Dimensions	Weight
21299	14-1/2" x 13" x 15"	8 lb

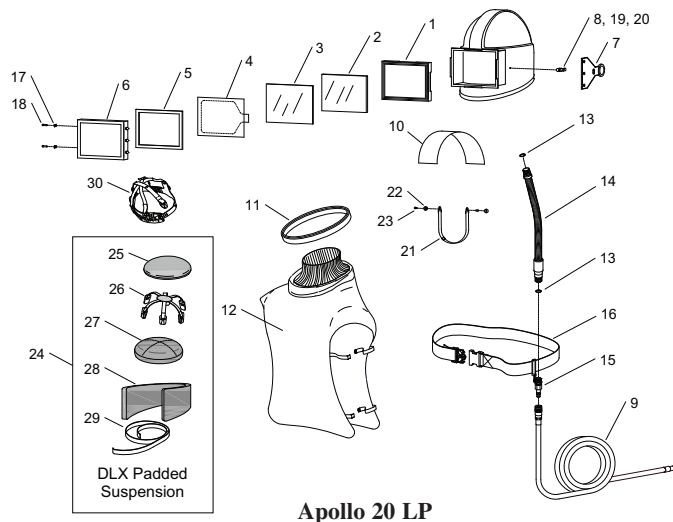
Respirator Hose (Bagged)

Stock No.	Dimensions	Weight
22510	Respirator hose 1/2" x 50ft Approximate 17-1/2" x 17-1/2" x 4"	11 lb
21413	Respirator hose 1/2" x 100ft Approximate 17-1/2" x 17-1/2" x 6"	22 lb

Replacement Parts

Item	Description	Stock No.
1.	Gasket, molded window	99996
2.	Inner lens, 4-5/8" x 6-5/8" nom., .125" package of 5	21409
3.	Middle lens, 5" x 7" nom., .094" package of 5	21410
4.	Cover lens, perforated, .0075" package of 25	21411
5.	Gasket, lens frame	21041
6.	Lens frame	20976
7.	Latch, lens frame, rubber	21298
8.	Button, latch	21040
9.	Respirator hose, 1/2" x 50 ft. (alternate)	22510
	1/2" x 100 ft. (alternate)	21413
10.	Partition, air baffle	21118
11.	Cape attachment strap	10534
12.	Cape with inner collar	21301
13.	O-Ring, 7/8" OD, 2 required	22815
14.	Breathing tube assembly includes two of item 13	22811
15.	Constant-flow connector, LP w/o belt	21429
16.	Belt, 2" web with buckle	04430
17.	Nut, lens frame, 2 required	90041
18.	Screw, lens frame, 2 required	90295
19.	Screw, 8-32 x 1/2" for latch, 2 required	21402
20.	Screw, 8-32 x 1" for latch, 2 required	21403
21.	Chin Strap	04460
22.	Chin strap holder, 2 required	21696
23.	Screw, 8-32 x 1/2" Ph Hd, 2 required	21119
24.	DLX padded suspension kit includes items 25 thru 29	25215
25.	Pad, top	25216
26.	Suspension web	25219
27.	Pad, middle	25182
28.	Pad, side	25218
29.	Hook-fastener tape, 1" adhesive backed, 2-ft. used, specify feet required	25185
30.	Web suspension w/sweatband (alternate)	10532
	Apollo 20 LP Owner's Manual	21991

Authorized Distributor:



Apollo 20 LP

ISO 9001:2000 certified. Clemco is committed to continuous product improvement. Specifications are subject to change without notice.